

KRONOS Sound Libraries KRS Professional Sounds



Bedienungsanleitung

KORG

KRS 06 CX-3 Signature Sounds

Zur Feier der überarbeiteten CX-3-Klangerzeugung in der Systemversion 2.1 des KRONOS haben wir einige unserer Lieblingsorganisten gebeten, ein paar Sounds dafür zu programmieren. Heraus kam dabei KRS-06: „CX-3 Signature Sounds“, eine Bank mit 128 EXi-Programms prall gefüllt mit den typischen Sounds dieser bewundernswerten Künstler, welche die neuen CX-3-Funktionen ausgiebig nutzen.

KRS-06-Künstler

Folgende Künstler haben Sounds für die KRS-06-Bank beigesteuert:

- Keith Emerson (Emerson, Lake, and Palmer)
- Larry Goldings (John Scofield, Pat Metheny, Michael Brecker, Jack DeJohnette, James Taylor)
- Neal Evans (Soulive)
- Mike Finnigan (Jimi Hendrix, Joe Cocker, CSN, Etta James, Taj Mahal, Bonnie Raitt)
- Rami Jaffee (The Wallflowers, Rickie Lee Jones, Soul Asylum, Macy Grey, Richie Sambora)
- David Jaques (Vintagekeyboardsounds.com)
- Naoto Nishikawa (Naoto Nishikawa Trio, Seiichi Nakamura, Saori Yano, JiLL-Decoy association)
- Hajime Kobayashi (Ann Sally, Mitch, Ban Ban Bazar, Ko Shibasaki)
- Takanobu Masuda (B'z, BLAZE)
- Hiroyuki Namba (Sense of Wonder, Tatsuro Yamashita)
- Martin Ernst (Martin Ernst AllStars, Zucchero, Phil Collins, Clif Richard, Paul Carrack)
- Andreas Gundlach (Gregor Meyle, Veronika Fischer Band, Chin Meyer, Dresdner Sinfoniker, SAGA)

Die Program-Namen enthalten die Initialen des jeweiligen Künstlers: KE für Keith Emerson, LG für Larry Goldings usw. Weitere Informationen zu diesen Künstlern finden Sie unter „KRS-06 Artists“ auf Seite 8.

Die KRS-06-Bank erfordert die KRONOS-Systemversion 2.1. Die Version 2.1 ist ein kostenloses Update, das unter www.korg.com/kronos zum Download bereitsteht.

Übertragung der Sounds vom Computer

Laden Sie sich die Sound-Datei zunächst herunter.

1. Entpacken Sie die heruntergeladene Datei.

Das Zip-Archiv enthält eine „KRS-06.PCG“-Datei sowie einen „Manuals“-Ordner.

- KRS-06.PCG
- „Manuals“-Ordner
 - KRS-06_OM_E1.PDF
 - KRS-06_OM_F1.PDF
 - KRS-06_OM_G1.PDF
 - KRS-06_OM_J1.PDF

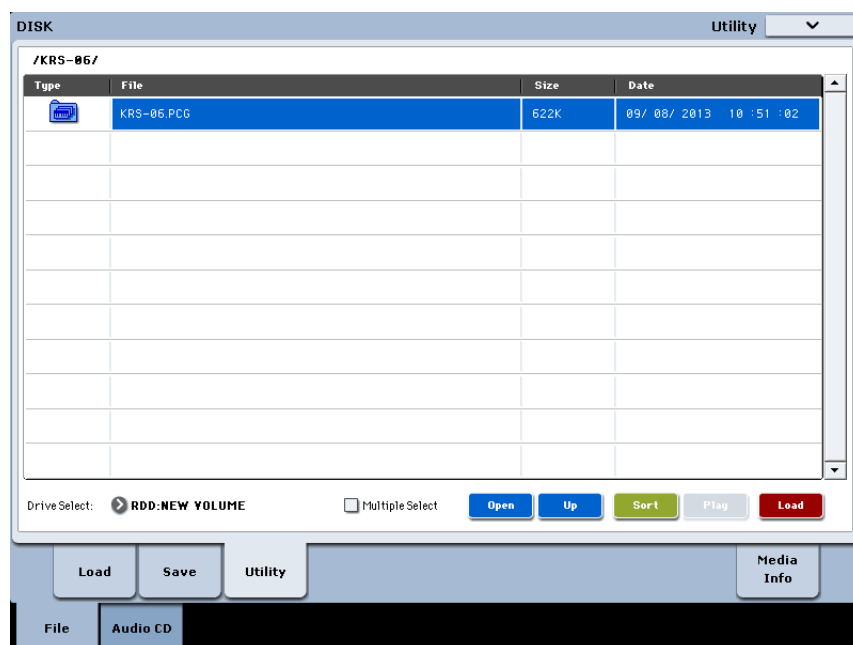
2. Speichern Sie die „PCG“-Datei auf einer USB-Festplatte oder einem USB-Speicherstick.
3. Verbinden Sie den USB-Datenträger mit dem KRONOS.
4. Drücken Sie den DISK-Taster, um in den Disk-Modus zu wechseln.

Warten Sie ein paar Sekunden, bis das USB-Gerät ordnungsgemäß angemeldet ist.

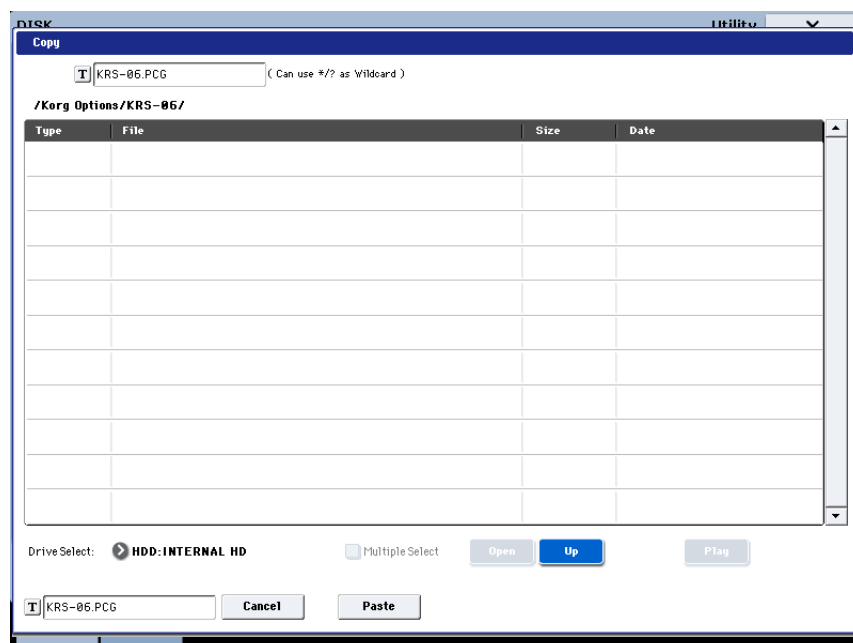
5. Wählen Sie mit „Drive Select“ den gewünschten USB-Datenträger.
6. Gehen Sie zur Seite „Disk Utility“.
7. Wählen Sie den „Copy“-Menübefehl und kopieren Sie die „PCG“-Datei zur internen Festplatte des KRONOS.

Wählen Sie im „Copy“-Dialogfenster mit „Drive Select“ als Speicherziel „HDD: INTERNAL HD“, selektieren Sie den gewünschten Speicherort und drücken Sie [Paste].


Wählen Sie die „PCG“-Datei des USB-Datenträgers.



Kopieren Sie sie zur internen Festplatte



Laden der Sounds in den internen Speicher

-  Vor dem Laden neuer Sounds sollten Sie die aktuell auf der internen Festplatte gesicherten Daten auf einem USB-Datenträger archivieren. Wenn Sie die „PCG“-Datei nämlich in eine Program-Bank laden, werden die bis dahin dort befindlichen Daten überschrieben.

Laut Vorgabe werden die Programs in die Bank USER-G geladen. Sie können sie aber auch in eine beliebige andere Program-Bank laden, wenn Sie möchten.

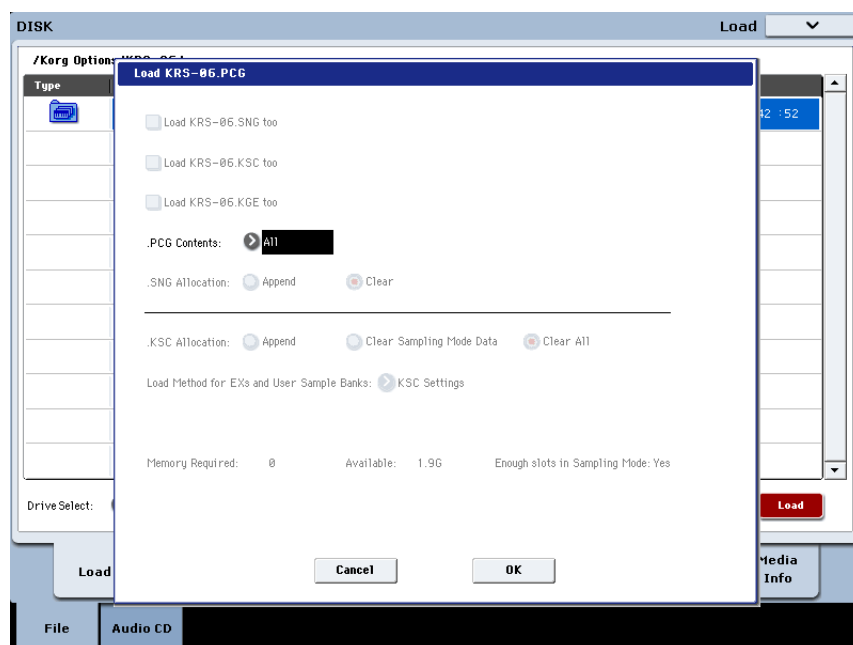
Laden der Programs in die vorgegebene Bank

Um die Programs in die Bank USER-G zu laden:

1. Gehen Sie zur Seite „Disk Load“.
2. Wählen Sie die „KRS-06.PCG“-Datei.
3. Drücken Sie den [Load]-Taster.

Es erscheint ein Dialogfenster.

4. Stellen Sie „PCG Contents“ auf „All“.



5. Drücken Sie [OK].

Die Programs werden laut Vorgabe in die Bank USER-G geladen.

Laden der Programs in eine andere Bank

Um die Programs in eine andere Bank zu laden:

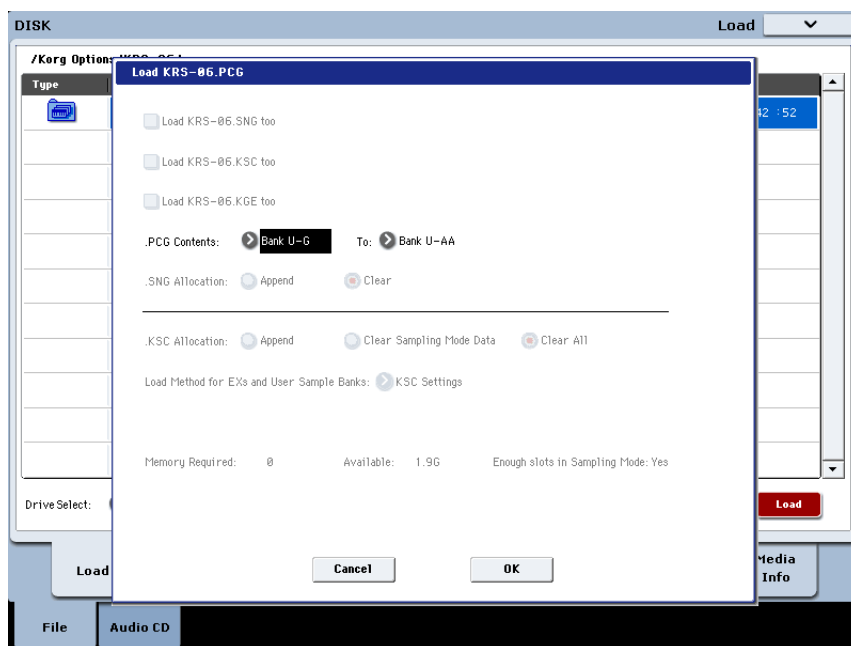
1. Gehen Sie zur Seite „Disk Load“.
2. Wählen Sie die „KRS-06.PCG“-Datei.
3. Drücken Sie den [Load]-Button.

Es erscheint ein Dialogfenster.

4. Stellen Sie den „PCG Contents“-Parameter auf „Bank U-G“.

Rechts neben diesem Parameter erscheint ein „To“-Parameter.

5. Wählen Sie mit dem „To“-Parameter die Bank, die Sie überschreiben möchten.



6. Drücken Sie [OK].

Die Programs werden in die gewählte Bank.

Laden des Schlagzeug-Pattern

Mit dem hier beschriebenen Verfahren können Sie bei Bedarf nur das Schlagzeug-Pattern laden:

1. Gehen Sie zur Seite „Disk Load“.
2. Wählen Sie die „KRS-06.PCG“-Datei.
3. Drücken Sie den [Open]-Button.

Jetzt werden zwei Ordner angezeigt: „Programs“ und „Drum Patterns“.

4. Wählen Sie den „Drum Patterns“-Ordner.
5. Drücken Sie den [Load]-Button.

Es erscheint ein Dialogfenster.

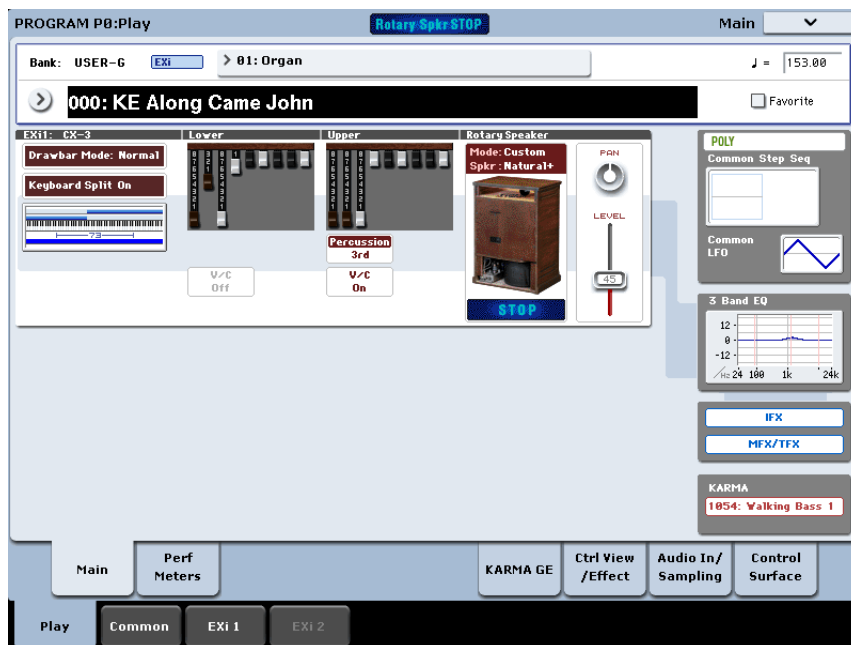
6. Drücken Sie [OK].

Das Schlagzeug-Pattern wird in die User-Bank geladen.

Anwahl der neuen Sounds

Programs

1. Drücken Sie den COMBI-Taster, um in den Program-Modus zu wechseln.
2. Drücken Sie den Bank I-E-Taster, wenn Sie die Daten in die vorgegebene Bank geladen haben. Andernfalls müssen Sie den betreffenden Bank-Taster drücken.
3. Rufen Sie mit den Inc/Dec-Tastern, dem VALUE-Rad oder mit Hilfe des „Select“-Dialogfensters die gewünschten neuen Sounds auf.



‘Drum Track’-Pattern

Speicher U229 enthält ein neues „Drum Track“-Pattern. Es kann in allen Programs, Combinations und/oder Songs verwendet werden.

Hören wir uns doch einmal an, wie das KRS-06-Program „008: KE Eruption Split“ dieses Pattern anspricht.

1. Wählen Sie die Bank, in der sich die KRS-06-Programs befinden.
2. Wählen Sie das Program „008: KE Eruption Split“.
3. Drücken Sie den DRUM TRACK-Taster und spielen Sie eine Note.

Das Schlagzeug-Pattern wird abgespielt.

4. Gehen Sie zur Seite „Program P4: Basic/Vector Drum Track“.

Als „Drum Pattern“-Bank ist hier „User“ gewählt und als Pattern-Speicher „U229 Eruption KRS6 [ALL]“.

Die KRS-06-Programs sprechen auch bestimmte Werks-Sounds an

Die KRS-06-Programs sprechen Drum-Programs und Drumkits an, die ab Werk im Instrument enthalten waren. Wenn Sie den Inhalt jener Bänke geändert oder gar nicht erst geladen haben, klingen die Programs etwas befremdlich. Sie könnten die intern gespeicherten Sounds aber archivieren und danach wieder die Werksdaten laden. Die Werksdaten befinden sich in der Datei namens „PRELOAD.PCG“ bzw. „PRELOAD.KSC“. Diese finden Sie im „FACTORY“-Ordner auf der internen Festplatte.

Support

Bitte wenden Sie sich mit eventuellen zur KRONOS-Bibliothek an Ihren Korg-Händler. Weitere Informationen über das weltweite Korg-Händlernetz finden Sie auf der Korg-Website: <http://www.korg.co.jp/English/Distributors/>

Voice Name List

Programs Bank USER-G [EXi]

| # | Name | Category | Sub Category |
|-----|--------------------------|----------|-----------------|
| 000 | KE Along Came John | Organ | Drawbar Control |
| 001 | KE My Sound (Amp1) | Organ | Drawbar Control |
| 002 | KE My Sound (Amp2) | Organ | Drawbar Control |
| 003 | KE Pathétique LowerMan | Organ | Drawbar Control |
| 004 | KE PicturesAtnExhibition | Organ | Drawbar Control |
| 005 | KE LowerMan Windmills | Organ | Drawbar Control |
| 006 | KE Rondo 69 | Organ | Drawbar Control |
| 007 | KE Little Arabella | Organ | Drawbar Control |
| 008 | KE Eruption Split | Organ | Drawbar Control |
| 009 | KE Eruption Upper | Organ | Drawbar Control |
| 010 | KE Eruption Lower | Organ | Drawbar Control |
| 011 | KE Barbarian Split | Organ | Drawbar Control |
| 012 | KE Barbarian Upper | Organ | Drawbar Control |
| 013 | KE Barbarian Lower | Organ | Drawbar Control |
| 014 | KE Knife Edge Split | Organ | Drawbar Control |
| 015 | KE Knife Edge Upper | Organ | Drawbar Control |
| 016 | KE Knife Edge Lower | Organ | Drawbar Control |
| 017 | LG My Sound | Organ | Drawbar Control |
| 018 | LG Slow Rotary | Organ | Drawbar Control |
| 019 | LG Walking Bass | Organ | Drawbar Control |
| 020 | LG Mellow | Organ | Drawbar Control |
| 021 | LG 16' Carat Goldings | Organ | Drawbar Control |
| 022 | LG The Hills Are Alive 1 | Organ | Drawbar Control |
| 023 | LG The Hills Are Alive 2 | Organ | Drawbar Control |
| 024 | LG The Hills Are Alive 3 | Organ | Drawbar Control |
| 025 | LG Moonbird | Organ | Drawbar Control |
| 026 | LG Trippin' Triads VJS | Organ | Drawbar Control |
| 027 | LG Goldings Grunge | Organ | Drawbar Control |
| 028 | LG Soul Grunge | Organ | Drawbar Control |
| 029 | LG Ballad Comp 1 | Organ | Drawbar Control |
| 030 | LG Ballad Comp 2 | Organ | Drawbar Control |
| 031 | LG Ballad Comp 3 | Organ | Drawbar Control |
| 032 | LG PercCeleste SW2 Trem | Organ | Drawbar Control |
| 033 | LG PercCeleste Split | Organ | Drawbar Control |
| 034 | LG EX PercCeleste | Organ | Drawbar Control |
| 035 | NE Basic | Organ | Drawbar Control |
| 036 | NE Perc | Organ | Drawbar Control |
| 037 | NE Half Moon | Organ | Drawbar Control |
| 038 | NE Full | Organ | Drawbar Control |
| 039 | NE 60's Slap! VJS | Organ | Drawbar Control |
| 040 | MF My Sound | Organ | Drawbar Control |
| 041 | MF Smutty | Organ | Drawbar Control |
| 042 | MF Extra Smut | Organ | Drawbar Control |
| 043 | MF WhistleStop | Organ | Drawbar Control |
| 044 | MF Bro' Ray (stop) | Organ | Drawbar Control |
| 045 | MF Bro' Ray (chorale) | Organ | Drawbar Control |
| 046 | MF HodgePodge | Organ | Drawbar Control |
| 047 | MF Feeling Low 1 | Organ | Drawbar Control |
| 048 | MF Feeling Low 2 | Organ | Drawbar Control |
| 049 | MF Praise Break | Organ | Drawbar Control |
| 050 | MF Testify | Organ | Drawbar Control |
| 051 | MF Squabble | Organ | Drawbar Control |
| 052 | MF Mello-D | Organ | Drawbar Control |
| 053 | MF Safe Landing | Organ | Drawbar Control |
| 054 | MF Grandma's Hands | Organ | Drawbar Control |
| 055 | MF Percanissimo | Organ | Drawbar Control |
| 056 | RJ 3 Marlenas 1 | Organ | Drawbar Control |
| 057 | RJ 3 Marlenas 2 | Organ | Drawbar Control |
| 058 | RJ One Headlight | Organ | Drawbar Control |
| 059 | RJ 1.5 Headlights | Organ | Drawbar Control |
| 060 | RJ Meat 'N Potatoes | Organ | Drawbar Control |
| 061 | RJ Long Road Ruined 1 | Organ | Drawbar Control |
| 062 | RJ Long Road Ruined 2 | Organ | Drawbar Control |
| 063 | RJ New Foo | Organ | Drawbar Control |
| 064 | HN Hard Dist | Organ | Drawbar Control |
| 065 | HN Organ Solo Perc | Organ | Drawbar Control |
| 066 | HN Hard Basic | Organ | Drawbar Control |
| 067 | HN Basic Perc 3rd C2 | Organ | Drawbar Control |
| 068 | HN Clarinet | Organ | Drawbar Control |
| 069 | HN Soul Ballad | Organ | Drawbar Control |

| # | Name | Category | Sub Category |
|-----|--------------------------|----------|-----------------|
| 070 | HN Baroque Rock Organ | Organ | Drawbar Control |
| 071 | HN Psychedelic SoloOrgan | Organ | Drawbar Control |
| 072 | HN Deka KORGUE Organ | Organ | Drawbar Control |
| 073 | HN Bossa Organ | Organ | Drawbar Control |
| 074 | TM Main Organ | Organ | Drawbar Control |
| 075 | TM Perc Organ | Organ | Drawbar Control |
| 076 | TM Full Organ | Organ | Drawbar Control |
| 077 | TM Clean Organ | Organ | Drawbar Control |
| 078 | TM Funky Organ | Organ | Drawbar Control |
| 079 | TM Child Organ | Organ | Drawbar Control |
| 080 | TM Burn Organ | Organ | Drawbar Control |
| 081 | TM G.Amp Organ | Organ | Drawbar Control |
| 082 | HK Manual Bass Organ | Organ | Drawbar Control |
| 083 | HK ShoTown | Organ | Drawbar Control |
| 084 | HK Old Rock THE BAND | Organ | Drawbar Control |
| 085 | AG Wha Solo | Organ | Drawbar Control |
| 086 | AG Wet Ballad | Organ | Drawbar Control |
| 087 | AG Dirty Dry | Organ | Drawbar Control |
| 088 | AG Spring Rev | Organ | Drawbar Control |
| 089 | AG ORGAN | Organ | Drawbar Control |
| 090 | NN Normal Jazz Organ 1 | Organ | Drawbar Control |
| 091 | NN Normal Jazz Organ 2 | Organ | Drawbar Control |
| 092 | NN Normal Jazz Organ 3 | Organ | Drawbar Control |
| 093 | NN Normal Jazz Organ 4 | Organ | Drawbar Control |
| 094 | NN Normal Jazz Organ 5 | Organ | Drawbar Control |
| 095 | NN Normal Jazz Organ 6 | Organ | Drawbar Control |
| 096 | NN Normal Jazz Organ 7 | Organ | Drawbar Control |
| 097 | NN Normal Jazz Organ 8 | Organ | Drawbar Control |
| 098 | NN Gospel Organ 1 | Organ | Drawbar Control |
| 099 | NN Gospel Organ 2 | Organ | Drawbar Control |
| 100 | NN Percussion Organ | Organ | Drawbar Control |
| 101 | NN Pure Perc Organ | Organ | Drawbar Control |
| 102 | NN Overdrive Organ | Organ | Drawbar Control |
| 103 | ME Basic BX-3 | Organ | Drawbar Control |
| 104 | DJ 147 Medium Distortion | Organ | Drawbar Control |
| 105 | DJ 147 Distorted | Organ | Drawbar Control |
| 106 | DJ Continental Vox | Organ | Drawbar Control |
| 107 | DJ WhyterShade | Organ | Drawbar Control |
| 108 | DJ CX-3 147 61 CLEAN | Organ | Drawbar Control |
| 109 | DJ OD B V2 DualRotary | Organ | Drawbar Control |
| 110 | DJ OD B Hush 1 | Organ | Drawbar Control |
| 111 | DJ OD B Hush 2 | Organ | Drawbar Control |
| 112 | KORG Heavy Jazz Organ | Organ | Drawbar Control |
| 113 | KORG Jimmy's Organ | Organ | Drawbar Control |
| 114 | KORG Chicago Blues Organ | Organ | Drawbar Control |
| 115 | KORG Home Town Organ | Organ | Drawbar Control |
| 116 | KORG Tube Drive Organ | Organ | Drawbar Control |
| 117 | KORG Dirty Rock Organ | Organ | Drawbar Control |
| 118 | KORG Jazz Fluid Organ | Organ | Drawbar Control |
| 119 | KORG Entertainer Organ | Organ | Drawbar Control |
| 120 | KORG Jazz Master Organ | Organ | Drawbar Control |
| 121 | KORG Soft Flutes 16' 4' | Organ | Drawbar Control |
| 122 | KORG VOX Split (Break) | Organ | Drawbar Control |
| 123 | KORG ForeLong Organ | Organ | Drawbar Control |
| 124 | KORG No Disgrace Organ | Organ | Drawbar Control |
| 125 | KORG Theatre Wheels SW2 | Organ | Drawbar Control |
| 126 | KORG Bright CX3 EX-Tones | Organ | Drawbar Control |
| 127 | KORG Cool Jazz Solo 3rd | Organ | Drawbar Control |

Drum Track Pattern

| # | Name |
|------|---------------------|
| U229 | Eruption KRS6 [ALL] |

KE: Keith Emerson, LG: Larry Goldings, NE: Neal Evans,
MF: Mike Finnigan, RJ: Rami Jaffee,
HN: Hiroyuki Namba, TM: Takanobu Masuda,
HK: Hajime Kobayashi, AG: Andreas Gundlach,
NN: Naoto Nishikawa, ME: Martin Ernst, DJ: David Jaques

KRS-06 Artists

USA

Keith Emerson

Keith Emerson is one of the most influential keyboardists in both rock and prog rock. His pioneering work in The Nice and the supergroup Emerson, Lake & Palmer brought keyboards to the forefront of popular music. At a time when the stage was dominated by guitarists, Keith was the first keyboardist to command that same respect and awe from his audiences. While he's also known for his use of synthesizers, it is as an organist that he found his musical voice, and played his most memorable compositions and solos.

<http://www.keithemerson.com/>



Larry Goldings

Larry Goldings is a skilled pianist, organist, and composer. After starting his career as a jazz pianist, his first major gig was with Maceo Parker, playing soulful and funky organ. Since that time he has played with a who's who of jazz and pop artists including John Scofield, Pat Metheny, Michael Brecker, Jack DeJohnette and James Taylor. As a band-leader he's released over 15 albums, and has also had compositions and arrangements featured on dozens of recordings. Larry is known for his unique drawbar registrations and willingness to explore the full sonic potential of the organ, including use of outboard effects.

<http://www.larrygoldings.com/>



Neal Evans

Neal Evans is the funky glue that holds together the powerful trio Soulive. The band has been together for 14 years, has released 15 albums, and played innumerable dates around the world. Known for his superhuman left-hand bass playing while comping aggressive clav and soulful organ, Neal is a consummate musician, always serving the needs of the music. He also plays in the larger funk band Lettuce, and has branched out into movie scoring and recently released a solo recording.

<http://nealevans.com/>

<http://www.royalfamilyrecords.com/soulive>



Mike Finnigan

Mike Finnigan has played piano and organ with an amazingly wide roster of artists over his long career in music. A musician's musician, Mike has played with Jimi Hendrix, Joe Cocker, Crosby, Stills and Nash, Dave Mason, Etta James, Taj Mahal and Bonnie Raitt, to name but a few. He is also a long-time member of the Phantom Blues Band. Mike excels at the blues, rock, and soul, and is a powerful vocalist as well as a smokin' organ player. Watching him play the organ is a master-class in registrations, dynamics, empathy and pacing.

<http://www.phantombluesband.com/>



Rami Jaffee

Rami first came to the public's attention in the early '90's as a member of the Wallflowers, with whom he still performs. A native Californian, he has done numerous sessions over the years with artists such as Rickie Lee Jones, Soul Asylum, Macy Grey and Richie Sambora, and opened his own recording studio (Fonogenic Studios) in Van Nuys. In 2005 he started recording with the Foo Fighters, and has been a member of that band ever since. Citing Benmont Tench and Garth Hudson as influences, Rami approaches his playing and production in service of the song and the band's overall sound, not just to show off his formidable skills.

<http://www.ramijaffee.com/>

<http://www.fonogenic.com/>

**David Jaques**

David Jaques is an avid Hammond collector who helped US project manager Jerry Kovarsky to evaluate the new CX3 engine. They compared the Kronos to his three vintage instruments: '55, '59, and '61 B3's, played through 145, 47, 147, 122, and 21H rotary speaker cabinets. During the evaluation they came up with a number of great-sounding Programs which we are pleased to share with you.

<http://www.Vintagekeyboardsounds.com>

**JAPAN****Naoto Nishikawa**

Naoto Nishikawa attended Tokyo University, and also studied under Akio Sasaki.

He started his career as an organist doing club dates and recording sessions, and plays jazz, fun, soul, and pop music. Currently he records and performs with his trio, an unusual and innovative combination of organ, piano, and drums.

<http://nishikawanaoto.net>

**Hajime Kobayashi**

Hajime Kobayashi started playing at clubs and bars around Tokyo when he was in Waseda University. His multi-faceted career has included acclaimed recordings with Ann Sally, Mitch, Ban Ban Bazar, and the actress Ko Shibasaki; live performances at jazz festivals and supporting major artists; and composition and arrangement for film. He played piano for the movie Glasses (Megane), which won a prize at the Berlin International Film Festival.

<http://www.geocities.jp/kobstride/>



Takanobu Masuda

Rock keyboardist Takanobu Masuda has toured with the multi-platinum band "B'z" for more than 20 years. B'z has released 23 number-one albums and sold almost eighty million records in Japan alone, and Masuda's skilled organ playing is a critical part of their sound and energy. He's also worked with singer Mari Hamada for 28 years as a keyboard player, composer, and arranger. His own band, BLAZE, puts a modern twist on British-style hard rock.
<http://www.bell-company.co.jp/>

**Hiroyuki Namba**

Hiroyuki Namba's career started in the 70's as a member of Mari Kaneko & Buxbunny. Following that he took off on his own as a solo musician, founded the band SENSE OF WONDER, toured with many major acts, and recorded with Tatsuro Yamashita, RC SUCCESSION, RED WARRIORS, and more. He's also served as a judge on musical TV shows, broadcast as an FM radio personality, and created music for games and animated shows. Currently he is a professor at the Tokyo College Of Music.
<http://www.vega-net.ne.jp/Namba/>

*Germany***Martin Ernst**

Martin Ernst is a German piano and Hammond organ player with a church-organ background, and the founder and bandleader of the Martin Ernst AllStars. With this band he produced the German versions of Saturday Night Live, The Gong Show, and many other TV shows. He has performed with many international stars including Joe Cocker, Zucchero, Phil Collins, Clif Richard, and Paul Carrack - to name a few. Martin hosts the live-streamed "living room concert" series Song of my Life, and composes various TV and film scores in his Dog House Studios.
<http://www.youtube.com/user/SongofmyLife2012/>
<http://www.legendslive.de>
<http://www.songofmylife.de>

**Andreas Gundlach**

Andreas Gundlach travels his country both as a solo piano performer and as a sideman-keyboardist for various artists in rock, pop, jazz and comedy. Since 2003 he's also worked for Korg doing presentations and sound, style, and demo-song programming for KORG Products including the OASYS, KRONOS, M3, SV-1, and Pa-Series.
<http://www.andreas-gundlach.de>
<https://myspace.com/andreasgundlach>
<https://www.facebook.com/andreas.gundlach.96>

